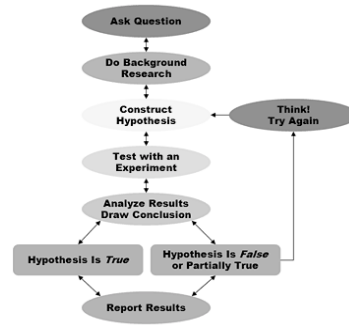


## Summative Assignment: Sow Bug Design a Lab



## Remember The Oreos? Designing an Experiment



## Review of Scientific Method

- Observe, research and ask a testable question
- Design an experiment
  - Variables, hypothesis, materials & procedure
- Carry out the experiment
  - Collect data after 10 minutes
- Report Findings
  - Write a conclusion with CEE.



## Your Misson...

- Design and carry out an experiment to test which of two different environments sowbugs prefer.
  - Light vs. dark
  - Wet vs. dry
  - Sand vs. dirt
  - Warm vs room temp
  - Dirt vs. leaves
  - Cold vs room emp
  - Bark vs. dirt
  - Green leaves vs. brown leaves



You will use a "choice chamber" like the one shown.

### Yes, we will be working with bugs!

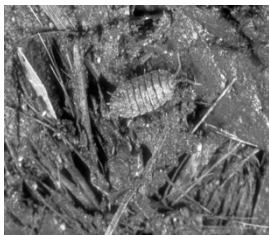


### Background Information



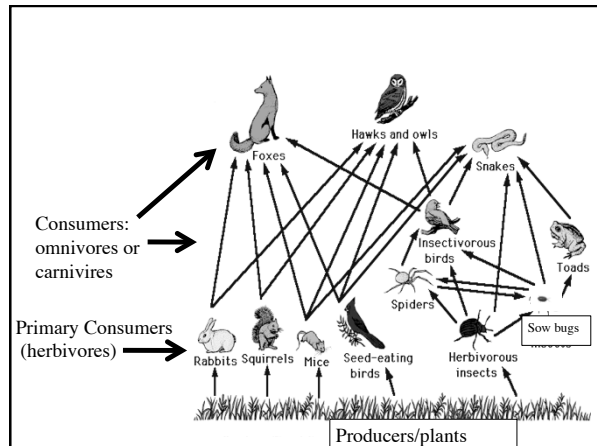
- Sowbugs:
  - AKA Roly Poly, Monkey peas, wood lice, pill bugs, potato bugs

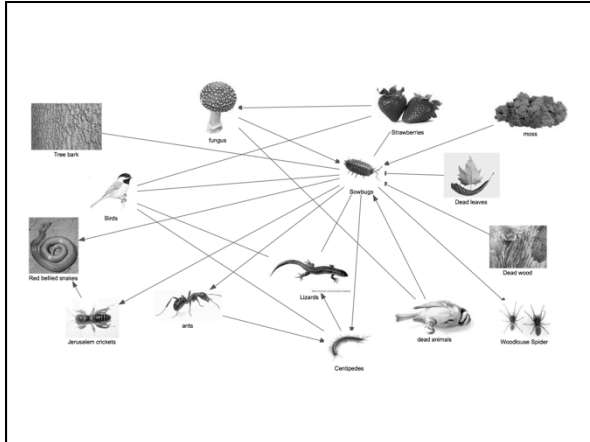
### Sowbugs



Live in "leaf litter", usually under bark or flat wood.

- Crustaceans (terrestrial)
- Breathe with gills, so they are restricted to areas with high humidity
- Some species are nocturnal.
- Omnivores feeding on dead or rotting plants or animals.





## Summative Assignment 80%

- Design your experiment
- Write up a draft – using the Washington Lab Format (Title → Data table)
- Show teacher before you can begin the experiment
- Carry out the experiment in a group & collect data today
- Write up a final FORMAL lab report (WLF)—on your own
- Must turn in through Google Docs, neatly written, or typed by Monday, September 22nd.

### When & what is due?

- Write up a final FORMAL lab report —on your own
- Must turn in through Google Docs, neatly written, or typed by Monday, September 22nd.