

Facilities Master Plan - Workshop #1

WELCOME!

We are so happy that you took time out of your busy day to take part in the workshop.

It does matter,
it will make a difference, and
it might very well shape the future of the
built environment in your school.



Why are you here?

- We need to hear about your schools and what is special about them.
- We want to share some of the information we have gathered that will impact the future of your school.
- We need you to prioritize the key issues at your school for the architects to focus on.



Why do you love your school?

- **We want to know...**
 - Go around the table and share why you *love* your school.
 - Report out the things your group loved, the things that need work.
 - What were some of the surprising things you heard?

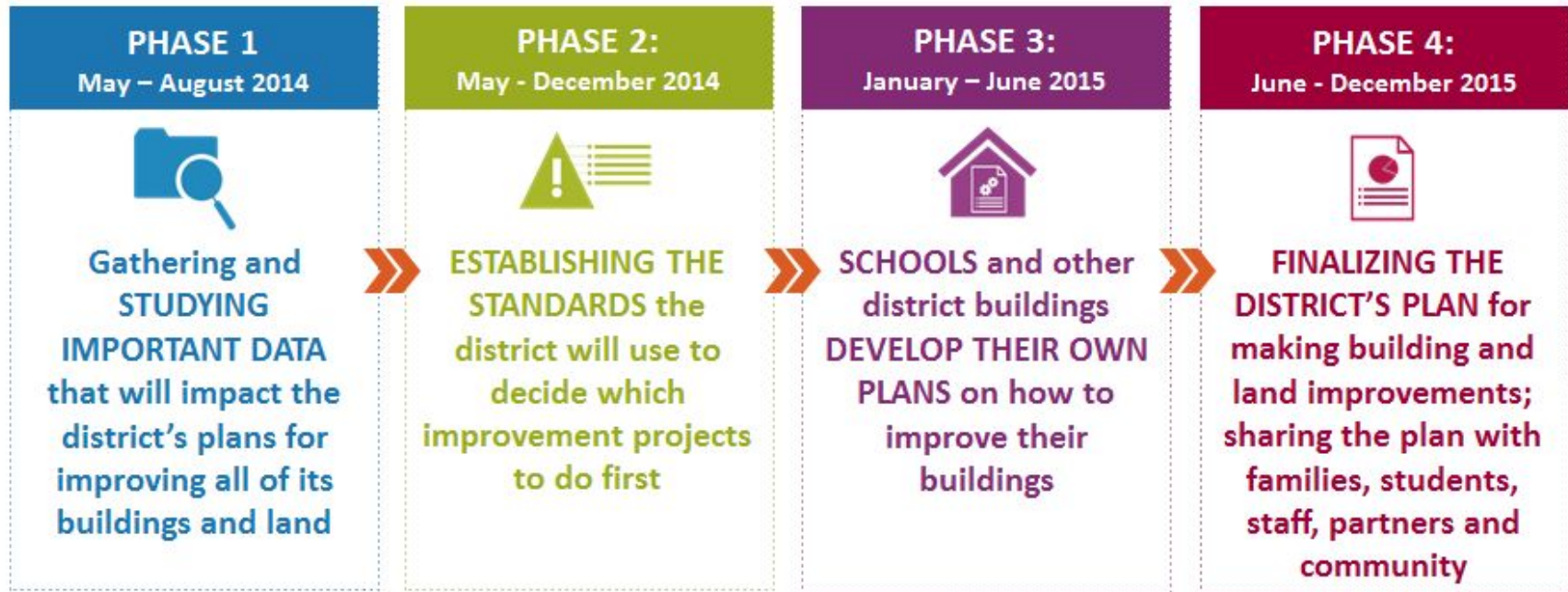


Why a Facility Master Plan?



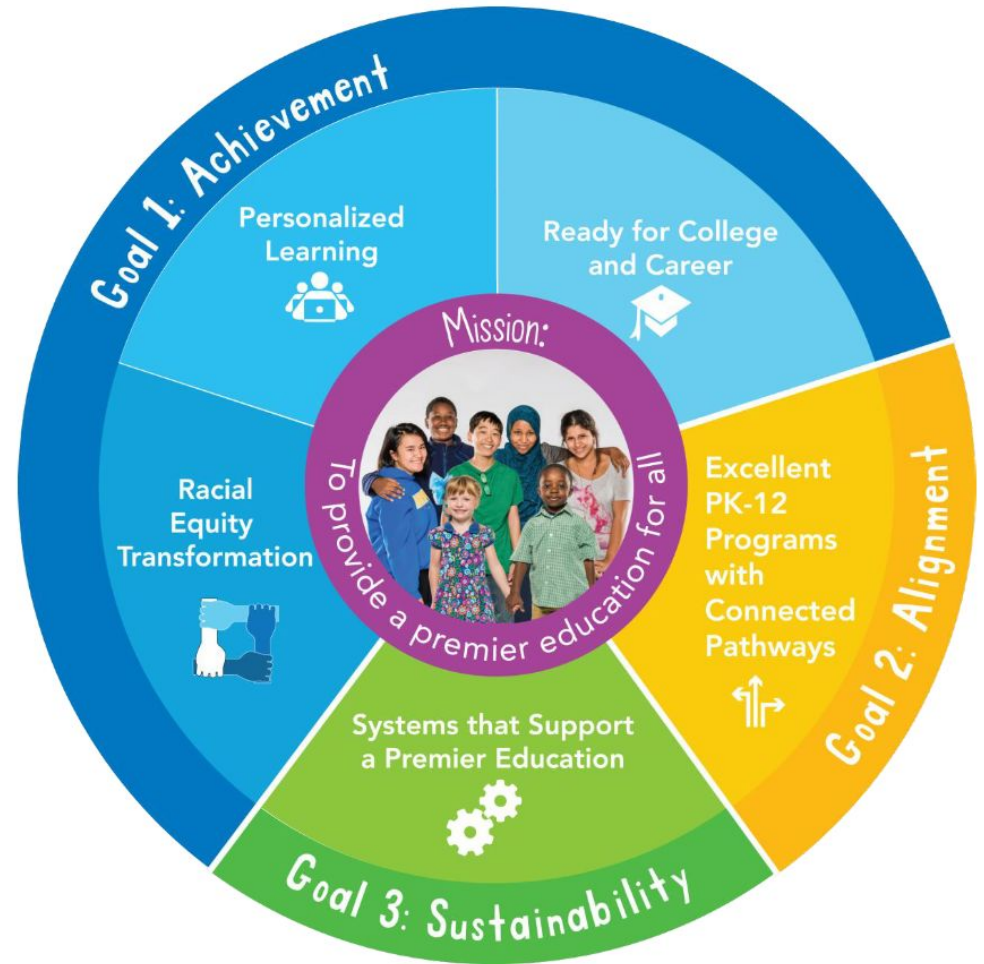
Facilities Master Plan - Planning Process

May 2014 – December 2015



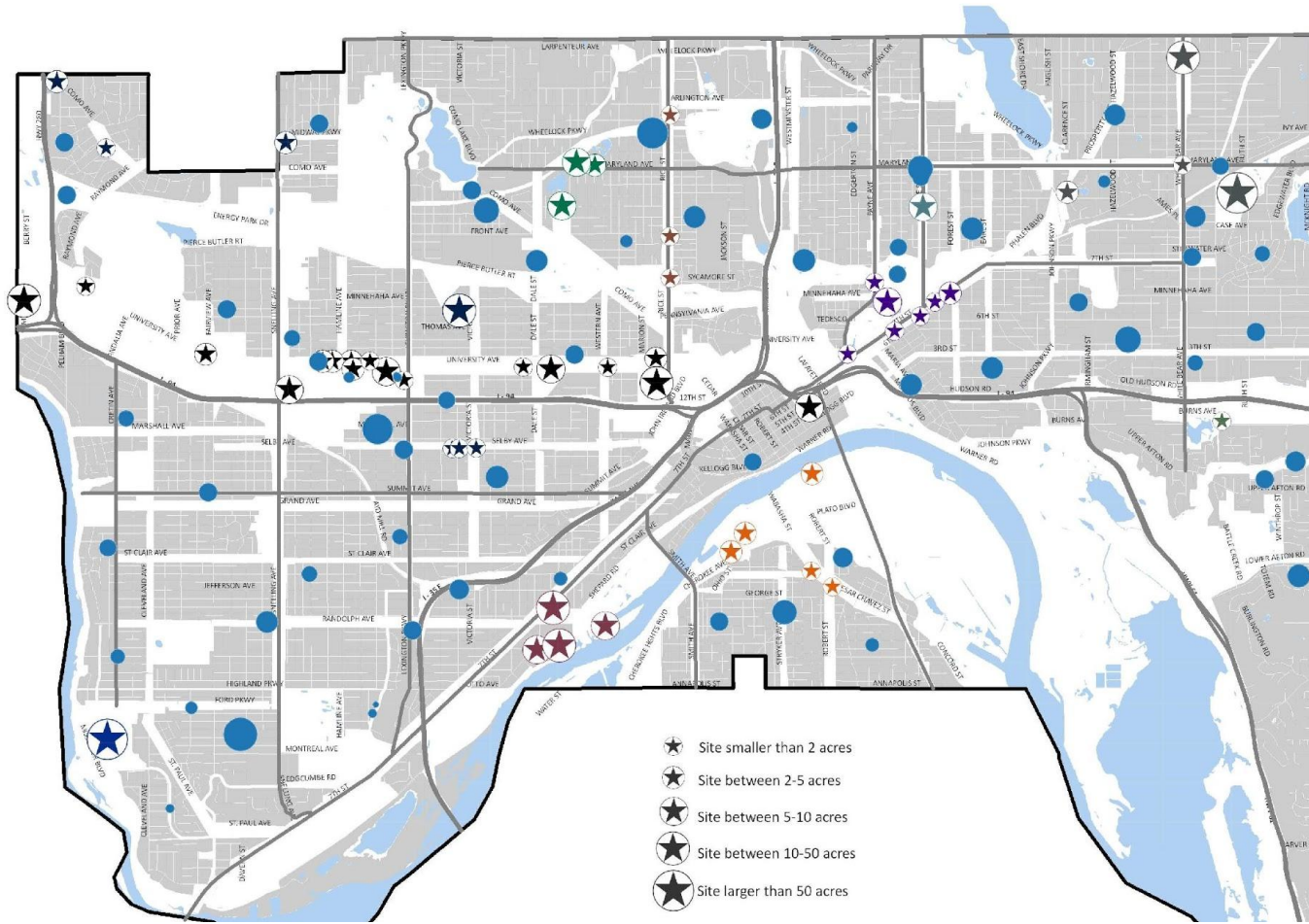
Framework for this workshop

- The planning must align to the strategic plan *Strong Schools, Strong Communities*



Saint Paul Public Schools... Did you know?

72 facilities / 7.3m sq. ft. of buildings / 465 acres of land



Framework for this workshop

- Major program elements remain as is:
 - Grade levels served per building (eg. PreK-5, 6-8, etc)
 - Exception: Adding PreK where possible (more later)
 - Attendance boundaries
 - Class size ratios
 - Special Education service models
 - Programs & Articulations (IB, Dual Immersion, Montessori, etc)
 - Joint Use sites and specifics

Framework for this workshop

- The planning must address all FMP Standards.
 - Examples:
 - **“Permanent Facilities”** means our plans must address the elimination of portable classrooms
 - **“Clear Main Entry”** means accessible, prominent, welcoming front entry

Framework for this workshop

- Not everything we are discussing will get funded
 - Need to understand the big picture to:
 - Align the resources we have
 - Explore if additional resources must be sought
 - SPPS is striving for **equity in all of our facilities**





Prompt for Action

- **91% of our buildings are 30-115 years in age**
- Industry Best Practice= Examination @ 85-90% Capacity
 - District facilities are at **95% capacity** (average)
 - PreK = looking to expand
 - Elementary = 80%
 - K-8 = 83%
 - **Middle = 99%**
 - **Secondary (6-12) = 95%**
 - **High School = 94%**
- **Target enrollment:**
 - 21 schools currently at or above target enrollment;
 - 7 schools are above 115% target enrollment



Prompt for Action – Grades K-12

- Focus your planning on **QUALITY**
 - The FMP Principles and Standards define it
- Focus your planning on **GROWTH**
 - The District is projected to **grow 4% - 8%** in 10 years
 - See the handout on your table for how your specific pathway is expected to grow
 - Growth must be **efficient!**

Prompt for Action – PreKindergarten

- Focus on **GROWTH** and **OPPORTUNITY**
 - Our facilities are the limiting factor to expanded PreKindergarten opportunities at our school sites
 - We want more PreK space, but recognize that our sites will never be sufficient to provide for universal PreK (if it comes) on their own
 - Growth must be **efficient!**
 - Small, PreK-only building additions are not very viable

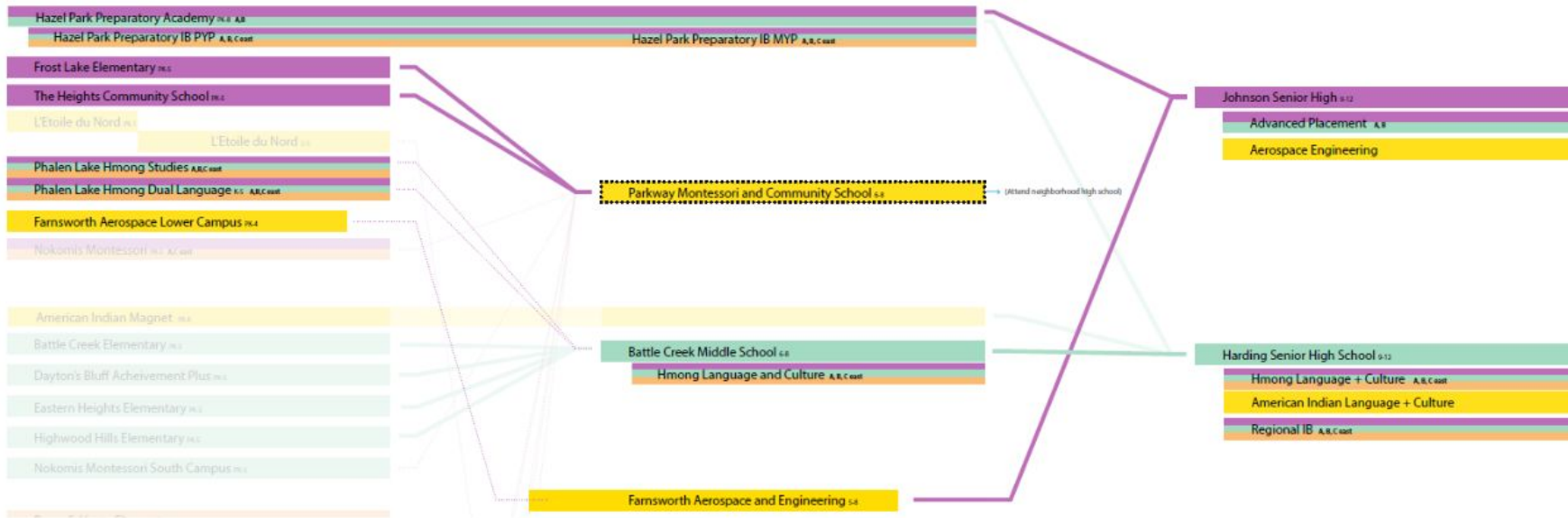
What we won't address today

- The following are discussions being addressed at the District level and won't be part of the pathway conversation:
 - Secondary Exterior Athletic Facilities
 - Examples: Football stadiums, practice fields, tennis courts, etc
 - Questions: Contact your Athletic Director or Facilities Department

Pathway Alignment

A

B



What we found out:

- FMP Phases 1 & 2 produced a lot of data and information. If you would like a more in-depth look at it, please visit: facilities.spps.org/fmp
- For today's purposes, we will focus on a few key elements:

“How many of our schools
out of 68 are currently at
or over capacity?”



Capacity & Enrollment

Pathway	School	Building	Site	Interiors	Systems
AREA E	Chelsea Heights	Orange	Yellow	Orange	Light Green
AREA E	Como Park Elementary	Yellow	Light Green	Yellow	Light Green
AREA E	Como Park Senior High	Orange	Yellow	Orange	Light Green
AREA E	Galtier	Light Green	Light Green	Light Green	Light Green
AREA E	Hamline Elementary	Orange	Orange	Orange	Light Green
AREA E	Murray Middle School	Yellow	Orange	Orange	Light Green
AREA E	Saint Anthony Park Elementary	Yellow	Orange	Light Green	Light Green



“What condition do you think
your school is in?”



Facilities Condition Assessment (District-Wide)



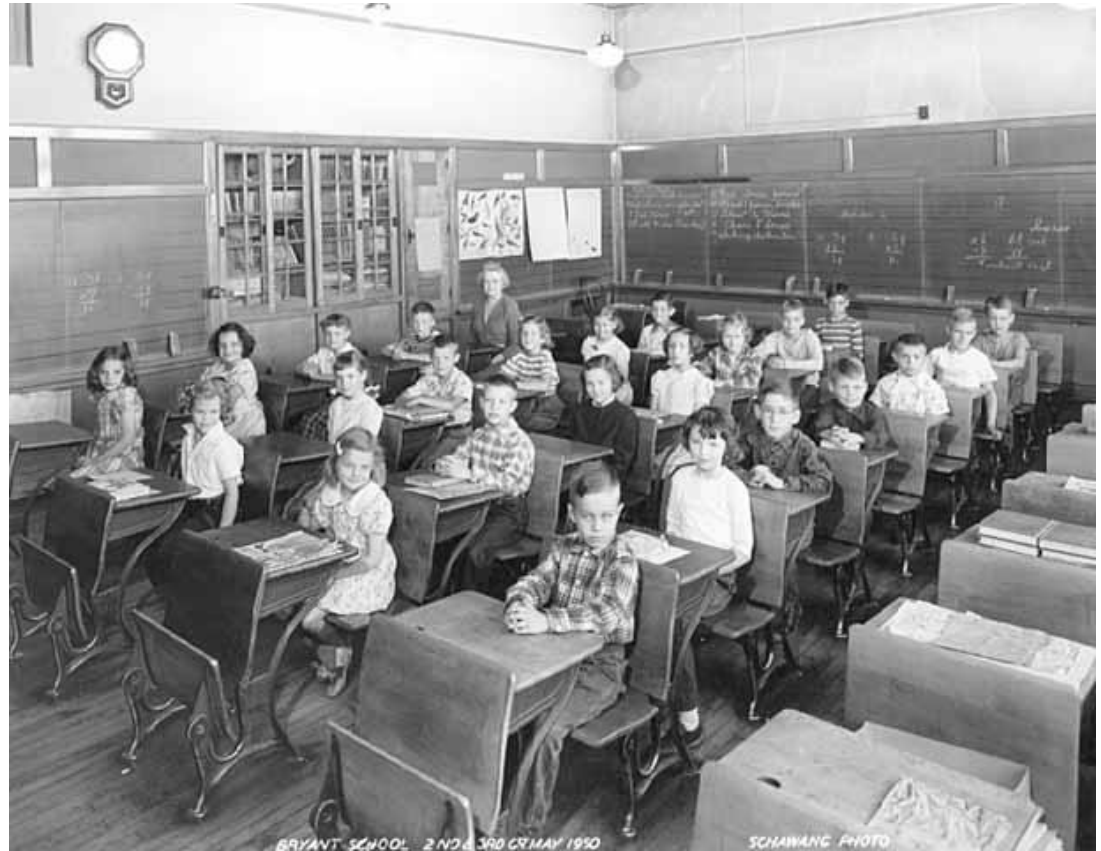
What does this data tell us?

- Future space needs of your building.
- Challenges for resources.
- Prioritization.



21st Century Learning

Is your building designed to reflect a 21st century learning model?



Impacting student learning through better facilities



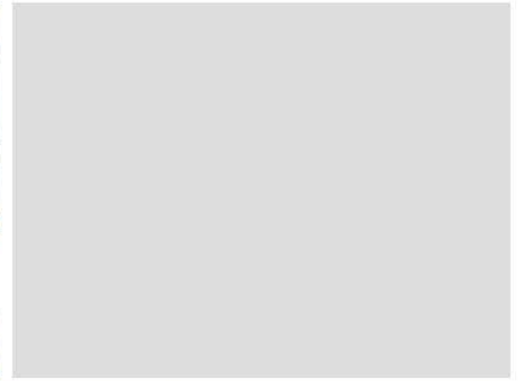
District Facilities Master Planning for 21st Century Learning



What things factor into a 21st Century Learning Environment?

- These facilities standards are the lens through which we, as architects and planners, will look at your schools.





Allow for a variety of learning experiences that promote personalized learning. Finishes and furniture are designed to promote collaborative, creative, and personalized learning. General Learning Spaces will be sized for variable teaching layouts, technology, and individual or group arrangements.

General Learning Space





Each school will have specialized lab/studio spaces for programs whose needs cannot be provided in a General Learning Space. All labs/studios will be designed with adaptability and flexibility in mind, so that site-based decisions about yearly program offerings are supported, and so that the spaces may be usable by students and community.

Specialized Lab/Studio Space



Create a clear, identifiable main entry with direct access to the main office. If students do not use this entry when they take buses, student entry to be identifiable and welcoming.

Clear Main Entry



Each school will have a space which allows gathering of the entire population of students and staff, thereby supporting and strengthening school community spirit. Design for multiple uses (e.g. a gym used for speakers and events as well as games).

Assembly Space

BREAK



Exercise #1: Top 10 Priorities

- Get together as a school team.
- Discuss what your top 10 priorities are for your school.
- Select another school to learn about.
- Be prepared to report out to the larger group after lunch.



LUNCH



Priority Report-Out

- The students will report-out their Top 10 Priorities.
- For the school teams: Select one or two people from your team to “Report-Out” your school’s “Top 10” priorities and why they are important.
- Did anything surprise you?

Questions?

- Is there any information you need from the district to inform your process and priorities?



What now?

- The architects have a lot to do over the next two months.

They will:

- Review site information, floor plans, and facilities condition data.
- Apply the district facilities standards to your priorities.
- Take the information you provided today as a direction for the future of the school.



What will we do at the next Workshop?

- The architects will bring back conceptual floor plans for each school.
- You will review and discuss these in order to help them improve and refine the conceptual designs.



We will see you again!



- PLEASE attend the follow-up workshop!
- We are currently exploring a week-night meeting in lieu of a Saturday meeting.
- Please visit: facilities.spps.org/fmp
- Don't forget to turn in your survey and question form at the sign-in table.

Thank you for giving your time to be here!

