

Saint Paul Public Schools

Designing for 21st Century Learning



St. Anthony Park School Design Committee Workshop 4: Synthesis & Design Validation



CUNNINGHAM
GROUP



Saint Paul
PUBLIC SCHOOLS
A World of Opportunities

WELCOME!

As you arrive, please grab 6 dots, look at the images posted, and place dots on those you like. We'll discuss at the end of the workshop.



RECAP



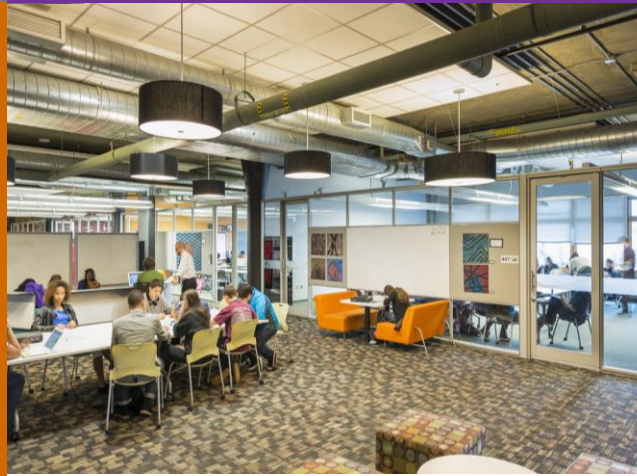
DOTMOCRACY



**SAP
DIAGRAMS**



PROS & CONS



REFLECTIONS

Recap

Workshops

1 + 2 + 3

Facilities Master Plan



“Plans are nothing;
planning is everything”

-Dwight D. Eisenhower

- Provides roadmap for District to implement sustainable and responsive facility projects by:
 - Establishing district-wide baseline facility needs
 - Identifying facility gaps and inequities across district
 - Providing criteria to fulfill projects fairly and efficiently
 - Determining implementation priorities for construction projects



Facilities Master Plan - Planning Process

May – August 2014

May 2014 - December 2014

January – June 2015

June - December 2015

Steering Committee



Phase 1
Prepare to Inform



**Data Collection and
Evaluation**

- Strong Schools, Strong Communities 2.0 (strategic plan)
- Enrollment and building capacities
- Demographic research
- Personalized Learning; Technology Plan
- Updated Educational Adequacy Assessment



**Facilities Master
Plan Committee**

Phase 2
Consult > Involve



**Establish District-wide
Priorities, Baseline
and Criteria**

- Determine large-scale system priorities
- Audit each site facility gaps/needs (baseline)
- Determine facility improvement prioritization criteria
- Estimate improvements costs
- Funding recommendations

Phase 3
Involve > Collaborate



**Develop Site-based
Priorities and Plans**

- Site and floor plan improvements and modifications
- Prioritized phasing of projects
- Estimated improvements costs
- Determine district's facilities governance committee structure

Phase 4
Inform



**Finalize Plan and
Share Results**

- Inform stakeholders
- Convene district facilities governance committee
- Board of Education presentation

Collaborate

Inform

School Design Committee

Responsible for shaping the work at **St. Anthony Elementary School**. Includes all stakeholders.

School Steering Committee

Responsible for guiding the overall process at **St. Anthony Park**. Includes: the principal, district academic and facilities leadership, building engineer, staff members, parent.



**WELCOME TO THE
DESIGN TEAM!**



What's Special Wordle



Day in the life...

Parent

- See student work all over (bulletin boards, display cases...)
- Clear entry, maps, signage
 - ↳ welcoming entry
 - signs saying hello in different languages
- Space for parents to gather - on playground or inside

Teacher

- Space to collaborate within grade/levels, between grade levels, & w/ specialists
- Multiple teachers/adults in space
- Ability to group students in different ways
- Access to windows & natural light
- Multiuse spaces

- ## Student
- space that feels comfortable - like a second home
 - choose who to be around (students + adults)
 - light, windows
 - space to move, and ability to choose where to be and what to sit on.
 - be able to have space meet different needs, sensory experiences
 - space to store things that isn't shared (reduce lla, disease, etc)

Teacher

- Sea of bodies
- Learning is approached in many different ways (collaboration, planning, really talking to each other, use data)
- Teaching styles will continually evolve as learning expectations change with parents, Comm., Students expectations.
- Purposely developing communication that still focuses on human interaction as well as Technology
- Some space to help develop/evolve (environment) learning styles, teaching styles, increased capacity

Learning looks like

Collaboration

- physical proximity (grade levels)
- Flexible spaces
 - Some open spaces (or could be opened)
 - accommodate introvert/extroverts
 - loud, quiet,
- More desirable to teachers who are trained w/ 4 C's
- Driven by evidence-based best practices for education.

KEY CONCEPTS

Welcoming

- *main entry, signage, safe & secure*

Natural Light

- *all classrooms with view and light*

Variety of Spaces

- *multiple scales, nooks*

Flexibility *now*

- *spaces and furniture all day*

Flexibility *for the future*

- *adapts as teaching/learning evolves*

Collaboration

- *students, teachers and parents*

Furniture, Movement

- *allow for choice*

Grade Clusters

- *easy access, collaboration*

Display

- *student work*

Partnerships & Community

- *harness relationships & connections*

Storage

- *sized appropriately*

Cafeteria

- *sized appropriately*

BLOCK PARTY

What Do We Want?

Organization + Adjacencies

BLOCK PARTY: KIT OF PARTS

Resource
& Gathering
Spaces

Yellow

Admin & Adult
Spaces:

Main Office
Nurse's Office
Copy Room
Staff Resource
Meeting Room

Orange

Specialists

Science
Music
P.E.
Art
Technology

Green

Small
Group
Spaces

Red

General
Learning:

Learning Spaces
for a 4-section
school

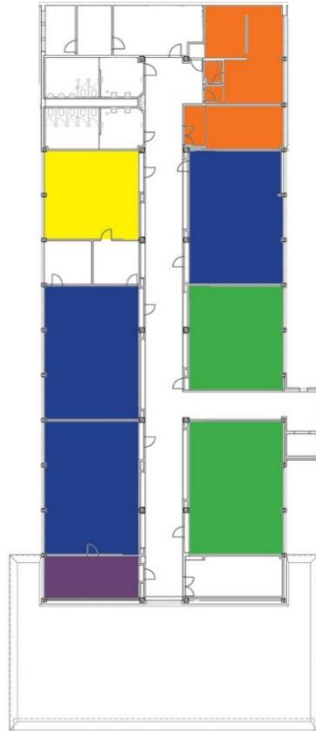
Blue

Specialized
Services:

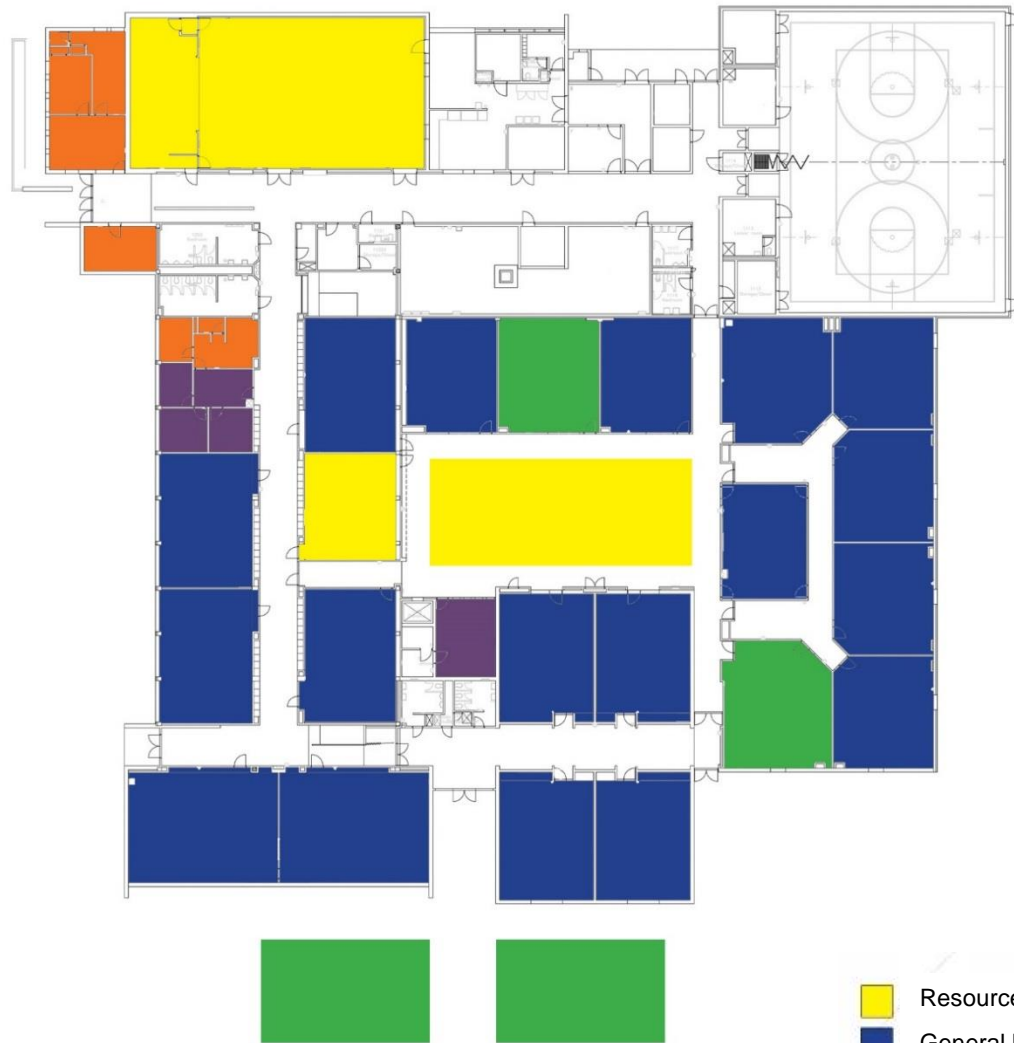
Special Ed
ELL
Social Worker
Counselor

Purple

EXISTING USE DIAGRAMS



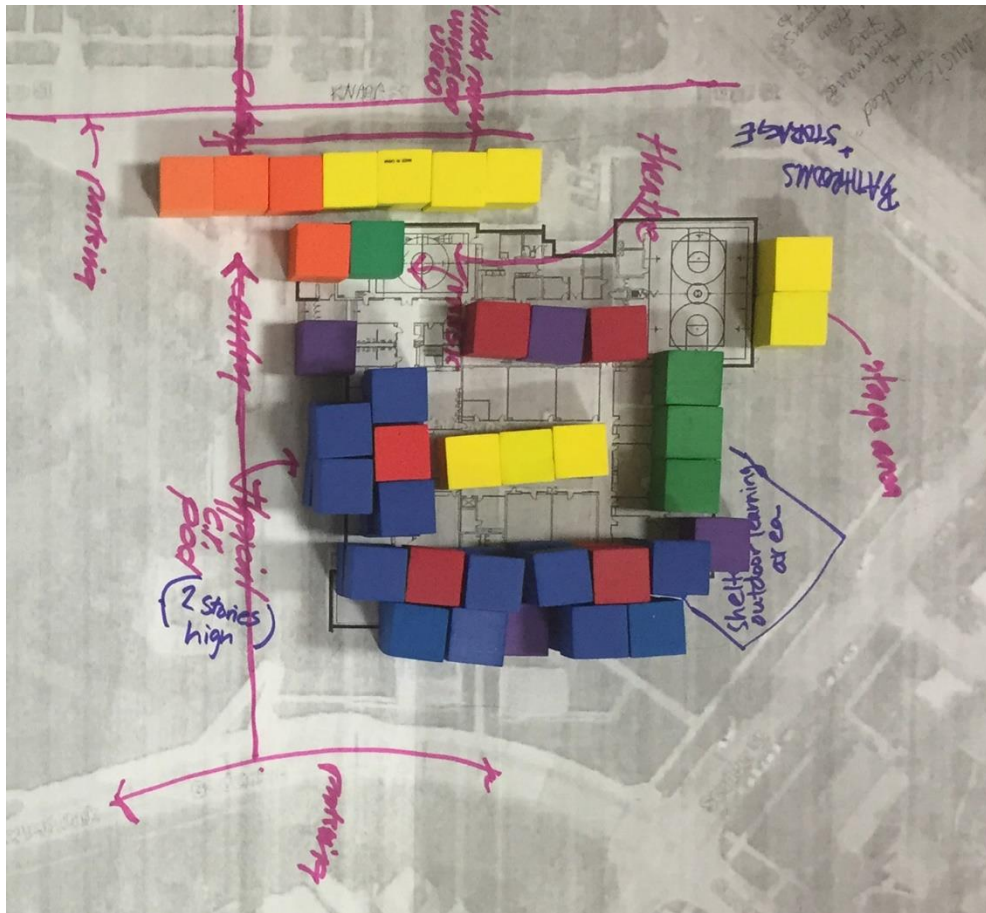
SAP - Level 2



SAP - Level 1

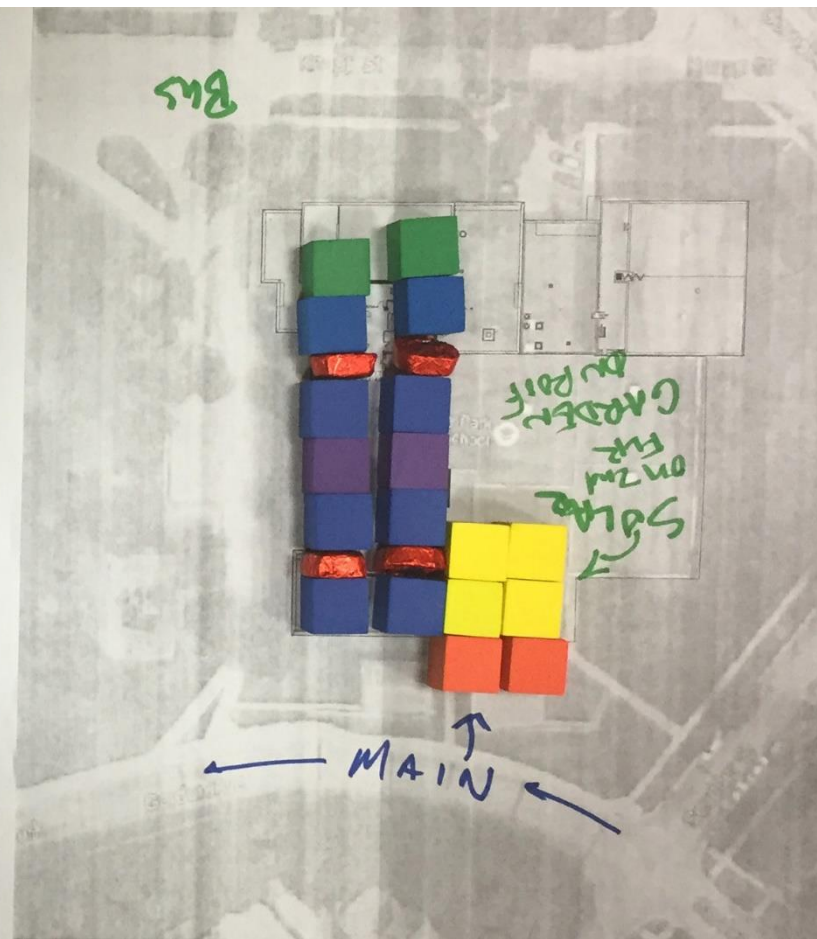
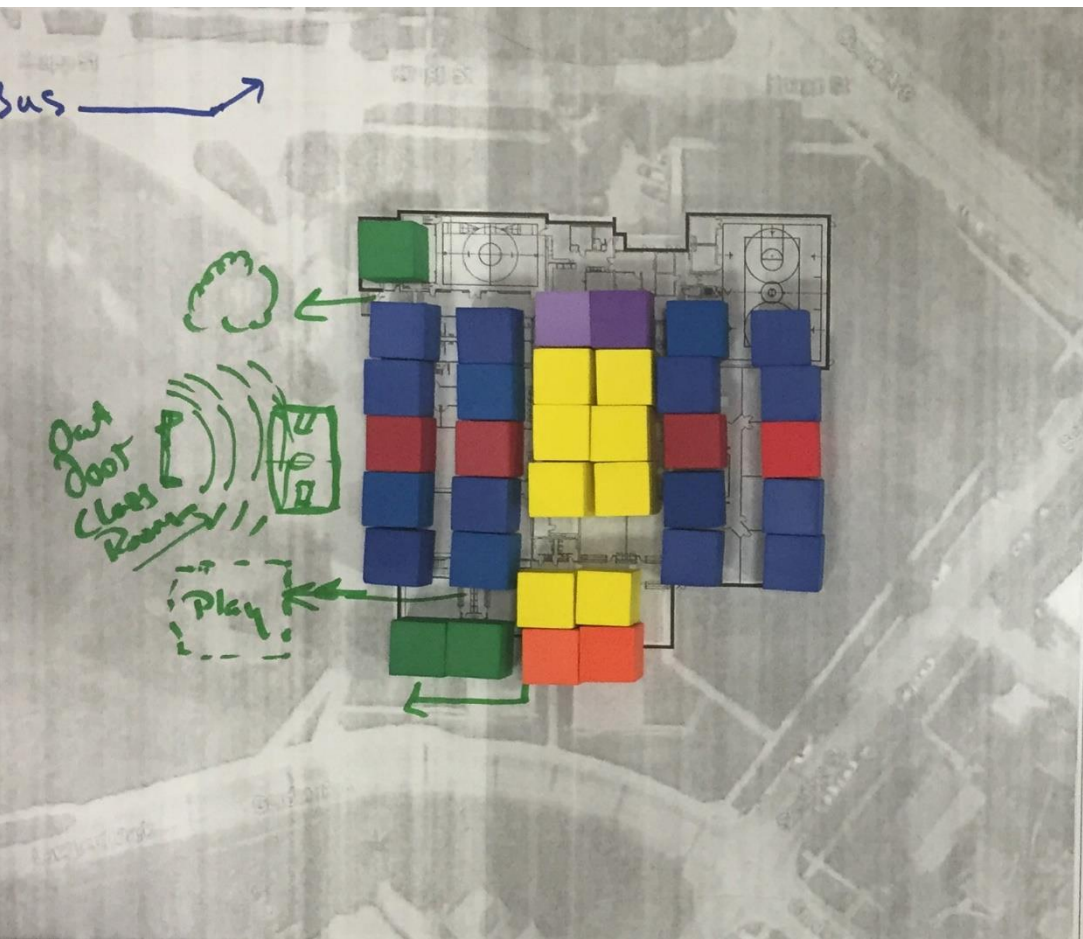
- Resource Spaces
- General Learning
- Specialists
- Small Group Spaces
- Admin & Adult Spaces
- Specialized Services

GROUP 1



- Prominent entry addition and new cafeteria space with windows along Knapp.
- Multi-purpose room becomes music suite.
- Classrooms clustered in groups of 4 around common central area.
- Specialists grouped and have wider halls.
- Specialized Services are distributed.

GROUP 2



- Main entry is relocated, enter into 2 story media center atrium space.
- Central media center is surrounded by clusters of classrooms with distributed small group rooms and specialized services.
- Take advantage of rooftop with gardens, solar panels, etc.

GROUP 3

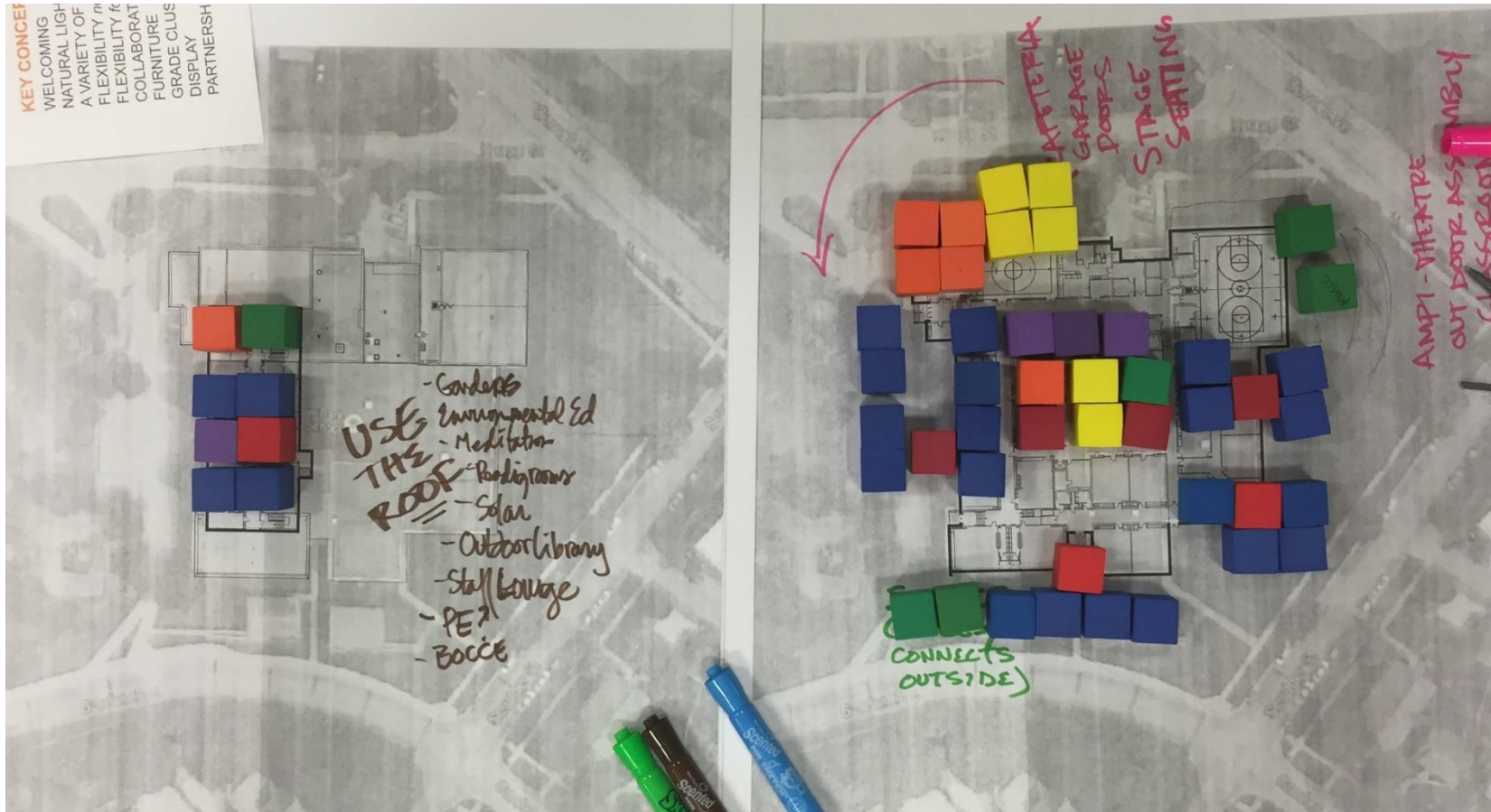


- Main office is enlarged to include more function, and a canopy.
- Classrooms clustered to allow daylight to all – and easy collaboration between teachers. Yellow space added to 4th/5th area to allow for grade level meetings or other opportunities. Specialists are dispersed.
- Outdoor: Amphitheater and running track

The left photograph shows a site plan with a building footprint. Colored blocks (blue, yellow, red, purple, green) are placed on the plan, likely representing different functional areas. Handwritten labels include 'Bathroom' and 'Garden'. The right photograph shows a more developed plan with multiple building footprints and colored blocks. Handwritten labels include 'Playground', 'Bathroom', 'Boh', and 'Amp. Audi'. A green arrow points to a path labeled 'make way'.

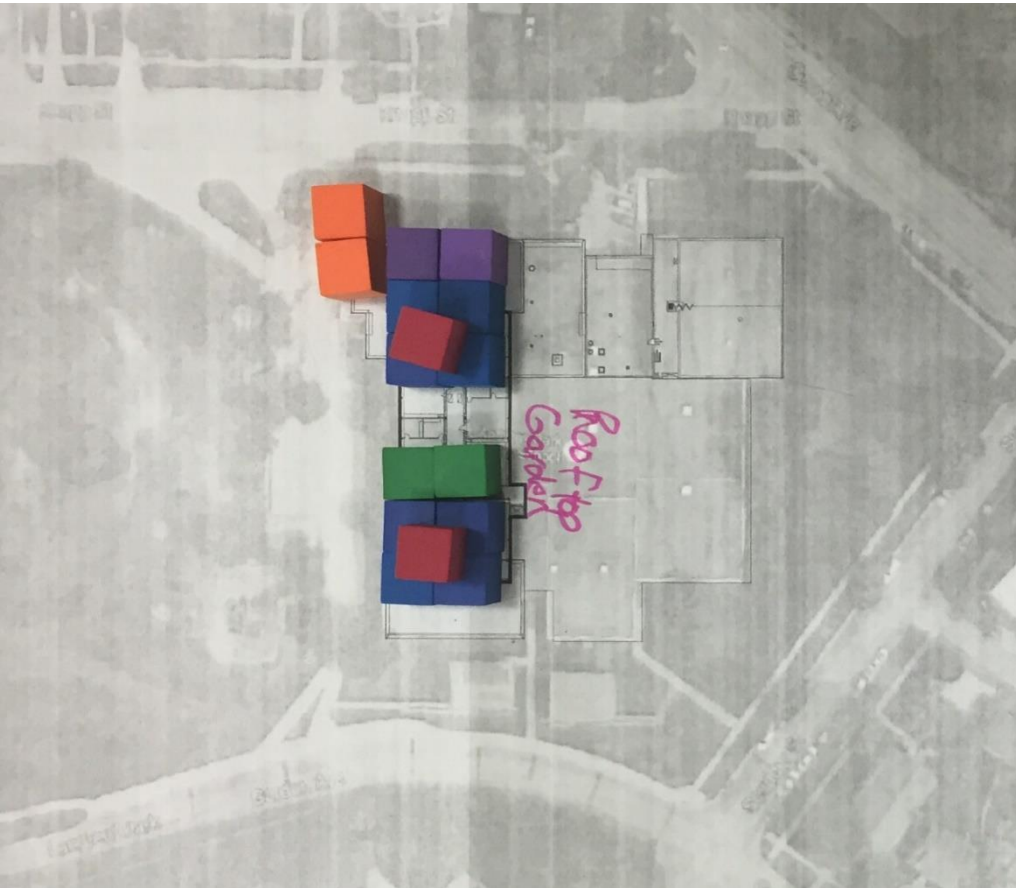
- 
- CUNNINGHAM**
G R O U P

GROUP 5



- Main entry is made more prominent. Alumni center added.
- Cafeteria extended toward Knapp. Outdoor dining.
- Clustered grade levels. Science has direct exterior access.
- Use the roof: Gardens, reading space, solar, etc.

GROUP 6



- Main office made 2 levels, space for teachers and community included.
- Clusters of classrooms. K-3 on main level, 4-5 upstairs.
- Science room added to level 2, takes advantage of roof for experiments.
- Common media space, dispersed services.
- More natural play area outside.

COMMON GROUND

- **More prominent main entry** that is visible and inviting.
- **Daylight** in all classrooms.
- **Classroom Clusters** for easy teacher access.
- **Dispersed group rooms and services.**
- **Cafeteria** is made larger and has daylight.
- **Media Center** remains central.
- **Outdoor space** both at grade and on the roof.

INFORMATION GATHERING

Meetings to date:

Administration

Custodial

Discovery Club

General Learning

Specialists

Specialized Services

Volunteers, Tutoring, Site Council

Upcoming: **Nutrition Services**

CONCEPT DIAGRAM

TABLE TALK

Discuss the conceptual diagram.

- **What do you like? Why?**
- **What would you change? Why?**
- **Record 'clarifying questions'**

DISCUSS THE DOTS

NEXT STEPS

Next Steps

Develop Space Program and Create Schematic Design

- Steering Committee meets over summer (June, July, August)
- Input from code, engineers, scope/cost will shape development of design

Reconvene Design Team in September



SCHEDULE

COMMUNITY
ENGAGEMENT

March-May 2016

DESIGN
DEVELOPMENT

May-August 2016

DOCUMENTATION
& BIDDING

Aug. - Dec. 2016

CONSTRUCTION

Spring 2017 Start



**Thanks! Have a
great summer!**

