

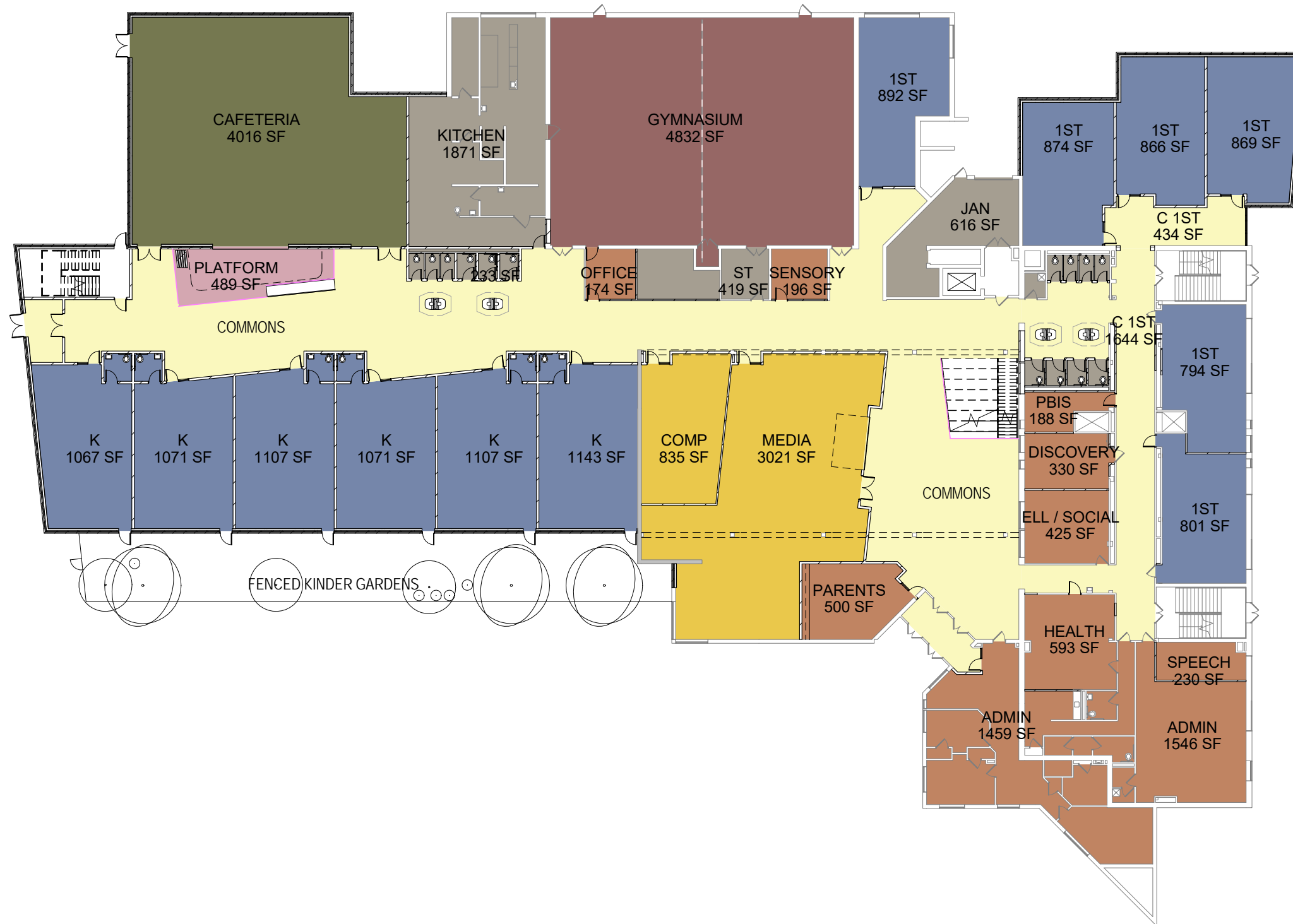
1 SITE
11 1" = 50'-0"

11 - SITE

LSE
ARCHITECTS
100 Portland Ave South, Suite 100
Minneapolis, MN 55401
Office (612) 343-1010
Fax (612) 338-2280
www.lse-architects.com.com
Architecture. Interior Design. Master Planning

CONCEPTUAL - ADAMS SPANISH IMMERSION

Project 16.1007.01
Date 5/9/2016
Drawn By TM
Checked By JA
11
Sheet Number



1 LEVEL 1
 12 1/32" = 1'-0"

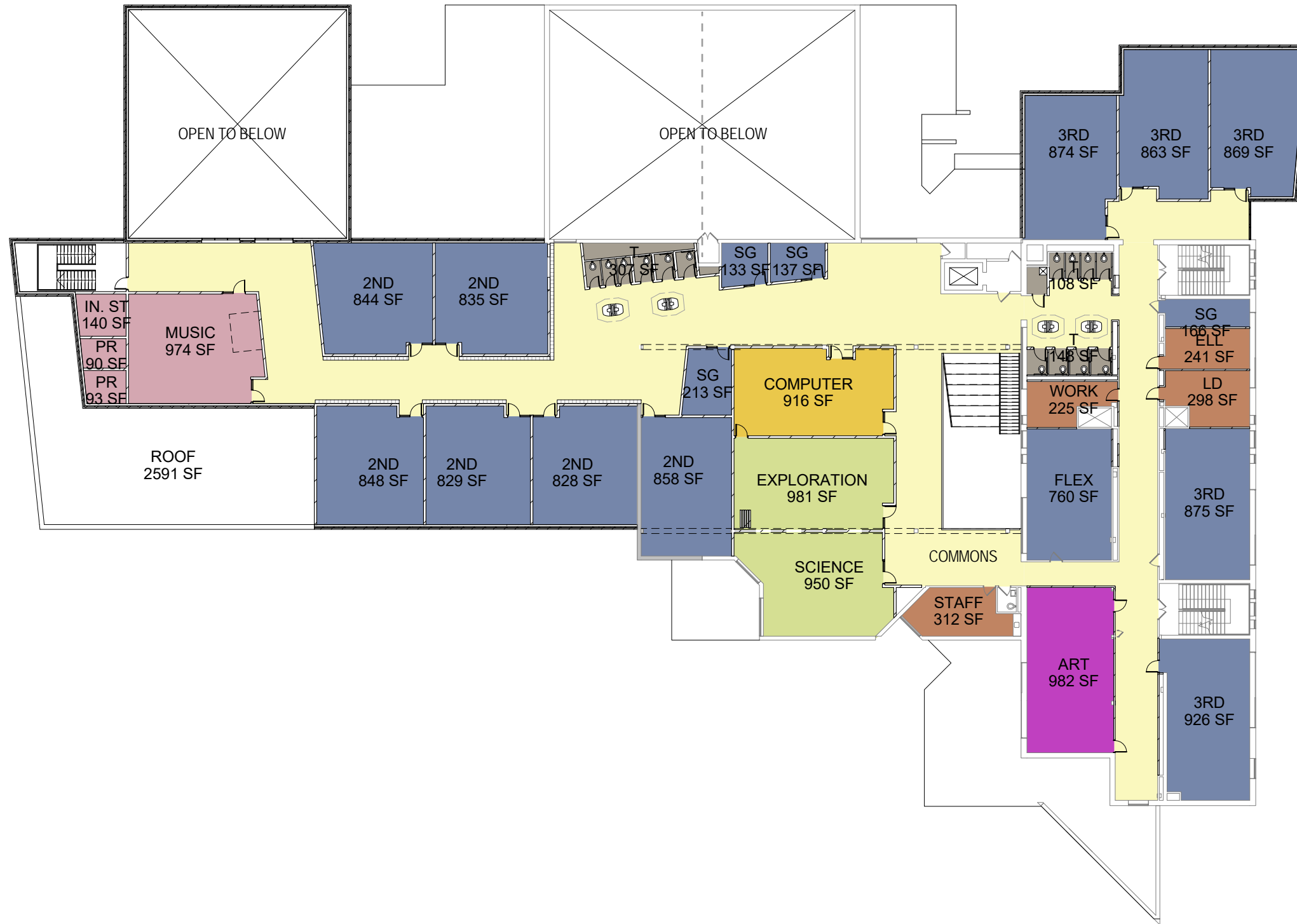
12 - LEVEL 1

LSE
 ARCHITECTS
 100 Portland Ave South, Suite 100
 Minneapolis, MN 55401
 Office (612) 343-1010
 Fax (612) 338-2280
 www.lse-architects.com
 Architecture. Interior Design. Master Planning

CONCEPTUAL - ADAMS SPANISH IMMERSION

Project 16.1007.01
 Date 5/9/2016
 Drawn By TM
 Checked By JA

12
 Sheet Number



1 level 2
 13 1/32" = 1'-0"

13 - LEVEL 2

LSE
 ARCHITECTS
 100 Portland Ave South, Suite 100
 Minneapolis, MN 55401
 Office (612) 343-1010
 Fax (612) 338-2280
 www.lse-architects.com
 Architecture. Interior Design. Master Planning

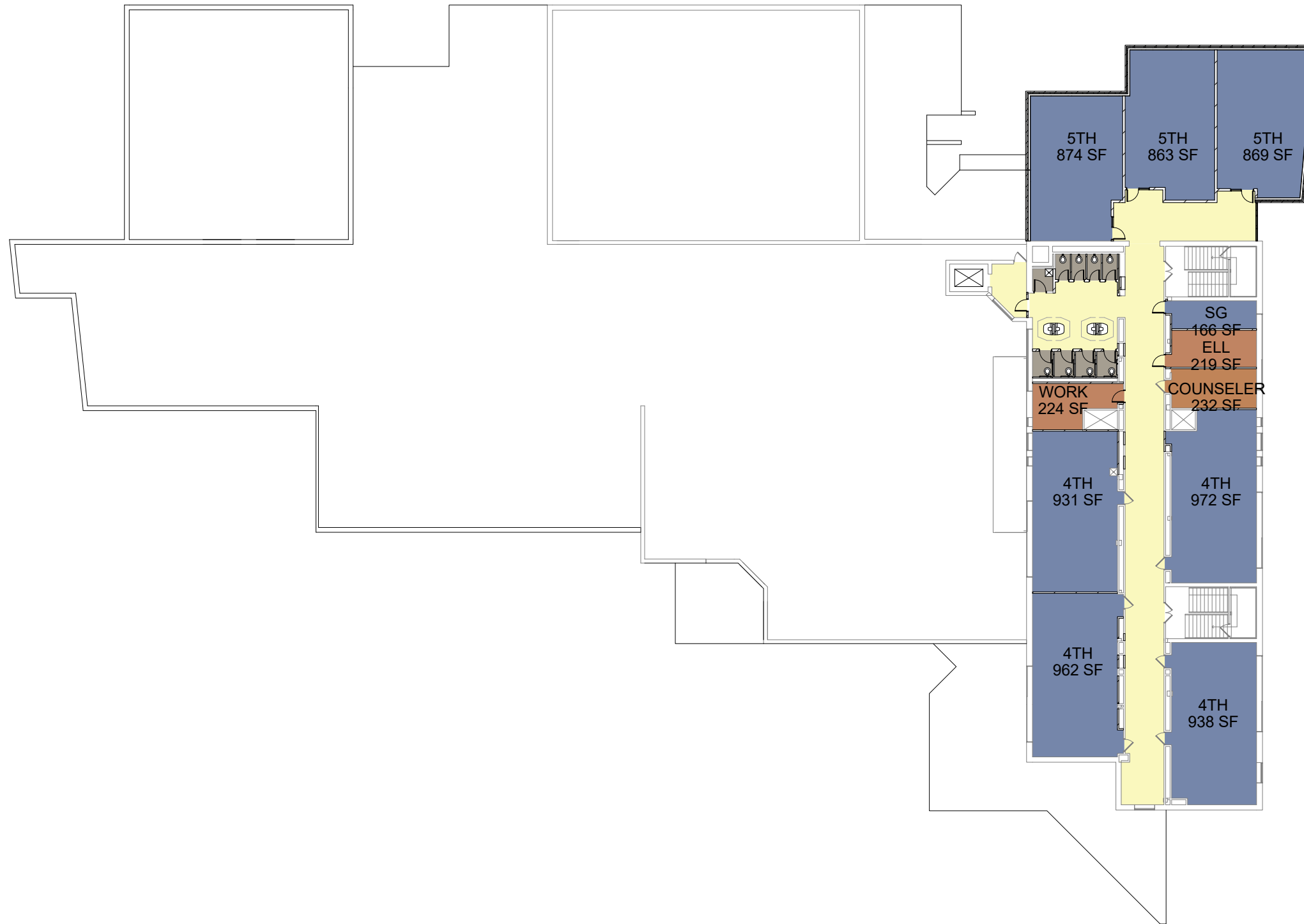
CONCEPTUAL - ADAMS SPANISH IMMERSION

Project 16.1007.01
 Date 5/9/2016
 Drawn By TM
 Checked By JA

13
 Sheet Number

5/9/2016 2:44:45 PM

Copyright © 2015 by LSE Architects, Inc.



1 LEVEL 3
 14 1/32" = 1'-0"

14 - LEVEL 3

LSE
 ARCHITECTS
 100 Portland Ave South, Suite 100
 Minneapolis, MN 55401
 Office (612) 343-1010
 Fax (612) 338-2280
 www.lse-architects.com.com
 Architecture. Interior Design. Master Planning

CONCEPTUAL - ADAMS SPANISH IMMERSION

Project 16.1007.01
 Date 5/9/2016
 Drawn By TM
 Checked By JA

14
 Sheet Number